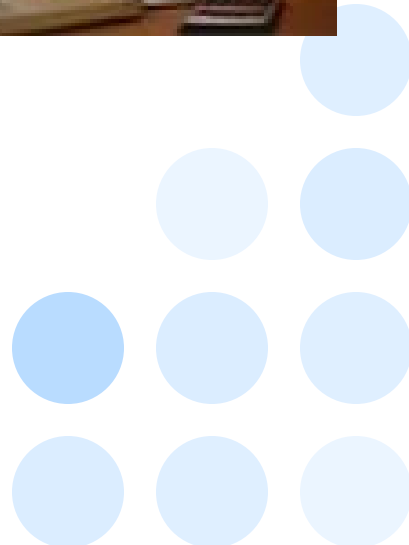


# Your Guide to Moving House

Helpful Hints and Check List



1



Guide to Moving House



## Moving House – Hints & Tips

*The Real Estate Institute of Australia (REIA) advise that in excess of 500,000 home owners move house each year. We thought that we would provide some tips for you when you move.*

### Do...

- get quotes from removalist firms and always check their insurance cover.
- the “big clean up and throw out” at least four weeks before you start packing. This stops you packing the chipped plates you’ve been meaning to throw out for years.
- hold a garage sale. People will pay good money for junk every time. Donate the leftovers to charity.
- pack vital papers like wills, passports, birth certificates, diplomas and so forth in a separate box and give it to a trusted friend or relative to keep until after your move.
- have a “TO BED” box filled with sheets, blankets, toothbrushes, pyjamas and any other necessities. This will make the end of a long day far more pleasant for all.

### Don't...

- ignore your phone, gas, newspaper, electricity and other contacts, who need to be cancelled at your old home then re-connected at your new home.
- forget to label your boxes! For example, a box marked “JACK’S ROOM” will save a lot of double handling and aggravation.
- mislay your keys. As soon as the new keys are given to you, put them on a string and wear them around your neck. You may look silly, but at least you won’t lock yourself out of your new home.
- forget to pack non-essential items like out of season clothes, rarely used vases etc. in boxes and mark them “NON-E”. Then you’ll know they can stay unpacked at your new home for a while (preferably not forever!).
- forget to pack a box marked “ESSENTIALS” with small tools, toilet paper, light globes, \$50 cash, soap and towel, mugs, coffee, tea, sugar and spoons, kettle, towels and other comfort items you’ll need on the big day. Highlight this box with a red texta.

## Reminder of Whom to Contact After You've Moved...



### Schools / Education

- Kindergarten
- Primary School
- Secondary School
- Tertiary Institution
- Public Library

### Financial/Legal

- Electoral office (in telephone directory under Government section)
- Bank / Building Society / Credit Union
- Credit Card issuers and store accounts
- Life assurance
- Car insurance and any other insurance
- Car registration and driver's Licence
- Hire purchase / leasing companies
- Social security (pensions etc)
- Shares, Investments, Government Bonds, etc
- Property and Contents Insurance
- Local police (if you're a witness in a case)

### Social

- Social Clubs
- TV and video rental / cable TV
- Children's Clubs (Little Aths etc)
- Sporting Clubs

### Telephone

- "Off" at old address
- "On" at new address

### Employment

- Workplace/s
- Super funds
- Trade unions / professional bodies
- Apprenticeship Commission (if applicable)
- Part time, evening, or correspondence courses

### Medical

- Doctor
- Dentist
- Hospital (if you're an outpatient)
- Baby health care centre
- Medicare / private health care fund

### Housekeeping

- Post Office (pay a small fee to have your mail re-directed)
- Neighbours
- Relations
- Committees / school canteen etc.
- Magazine subscriptions
- Newsagent (final delivery date)

### Gas

- "Off" at old address
- "On" at new address

### Electricity

- "Off" at old address
- "On" at new address